

# Global 360: Workflow Solutions for Microsoft®



## Maximize Your Investment in Microsoft® with Global 360's Keyflow™

### Microsoft Partnership

Global 360 is a certified Microsoft Gold Independent Software Vendors (ISV) Partner. As a Gold Certified ISV Partner, Global 360 is at the top level of Microsoft solutions partners. Global 360 works closely with Microsoft product and business development organizations to ensure our customers receive software solutions that seamlessly integrate in their Microsoft environments.

### Keyflow Overview

Keyflow™ software is a comprehensive business tool that streamlines and automates an organization's mission-critical business processes, regardless of complexity. Keyflow can be deployed in a single department, across an enterprise, or in business-to-business environments to speed decisions, increase productivity, and maximize efficiency without compromising flexibility. Keyflow is a simple, yet robust business tool that ensures the right people have access to the right information at the right time.

Keyflow provides integration to the following Microsoft products and technologies:

- ▶ SharePoint® Portal Server
- ▶ InfoPath® Information-gathering program
- ▶ BizTalk® Server
- ▶ Exchange Server

### Keyflow Features

- ▶ Easy-to-use Workflow Designer that uses a visual design interface for modifying, defining, and implementing simple or complex business processes throughout and beyond the enterprise
- ▶ Extensive XML capabilities that allow customization and integration flexibility
- ▶ Intelligent inference engine to evaluate business rules and data-driven logic
- ▶ Forms, documents, and links can to be attached securely to a workflow
- ▶ Dynamic, ad-hoc workflow capabilities
- ▶ Auditing and logging of business processes
- ▶ Integrates seamlessly with Microsoft technology

### Keyflow Benefits

- ▶ Lower operational costs
- ▶ Increased accountability
- ▶ Improved efficiency and effectiveness
- ▶ Increased control, accuracy and reliability
- ▶ Enhanced customer relationships

**Microsoft®**  
**GOLD CERTIFIED**  
*Partner*

 **Global 360**  
Optimizing Business Processes

## Keyflow for SharePoint® Portal Server

Microsoft SharePoint® Portal Server enables enterprises to develop an intelligent portal that seamlessly connects users, teams, and knowledge so that people can take advantage of relevant information across business processes to help them work more efficiently. Keyflow is business process automation software that helps organizations streamline and automate their flow of tasks, decisions, and mission-critical functions.

With Keyflow, users can manage and administer workflows within the context of Microsoft SharePoint Portal. Within SharePoint, users can access their workflow templates, launch workflows, and access their workflow tasks.

## Keyflow for InfoPath®

Microsoft InfoPath® is a dynamic electronic forms tool used to gather information more flexibly and efficiently. InfoPath supports any customer-defined Extensible Markup Language (XML) schema. Keyflow offers extensive XML capabilities providing seamless integration with InfoPath forms. Keyflow comes standard with a set of default InfoPath forms for starting workflows, workflow task messages, and FYI messages. Workflow designers can use the default forms as a template to create their own new custom forms. In addition, Keyflow users can view and respond to workflow tasks via integration between InfoPath and Keyflow. Keyflow applies business rules to the routing of InfoPath forms and using data from the InfoPath form itself as the criteria to determine the routing. The integration between Keyflow and InfoPath connects people, Information, and processes more effectively.

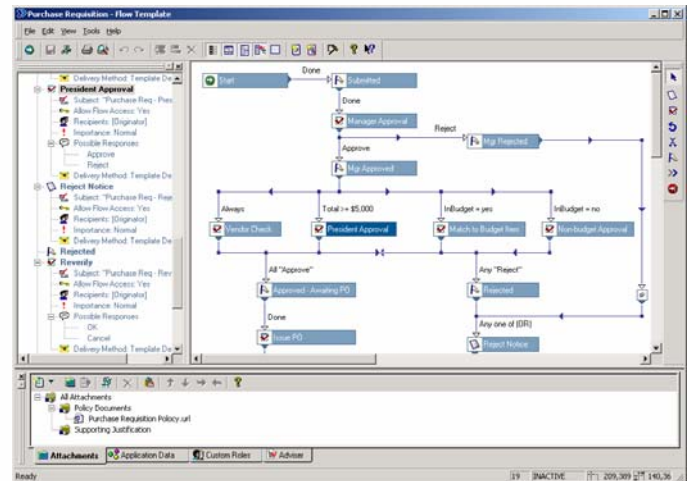
## Keyflow for Biztalk®

Microsoft Biztalk® Server provides robust transaction processing and extended enterprise connectivity. Biztalk excels at handling application-to-application business automation. Keyflow is a

business tool used to automate human processes. Keyflow excels at managing adhoc, exception-based, and human-facing transactions. Keyflow extends the application-to-application capability of BizTalk by providing an automated means of handling human-to-human and human-to-application process management. The integration between Biztalk and Keyflow enables a true end-to-end business process management.

## Keyflow for Exchange Server

Microsoft Exchange Server is the messaging platform that provides e-mail, scheduling, online forms, and the tools for custom collaboration and messaging-service applications. Since its inception, Keyflow was designed to leverage the power of Microsoft's Exchange Server. Through the many years of our Gold partnership with Microsoft, we have been leveraging Keyflow with every new release of Exchange. Today, Keyflow continues to perform with exceptional speed and accuracy with this integration.



## About Global 360

Global 360, Inc. is a leading provider of Business Process Management and Analysis Solutions for Global 2000 organizations. With more than two decades of experience, Global 360 provides organizations with a competitive edge by automating, measuring, and improving resource-intensive business processes across different communities, including customers, employees and partners. Global 360 provides organizations with the insight to make informed business decisions and the flexibility to quickly adapt to changing market needs through real-time metrics that ensure business objectives and customer commitments are managed effectively. Building on our strength in financial services, government and insurance, Global 360 empowers sites for more than 5,000 customers in 134 countries. Global 360 Inc. is headquartered in Texas with operations in North America, Europe, and the Pacific Rim. For more information about Global 360's BPM solutions, please call 1-214-520-1660 or visit the company web site at [www.global360.com](http://www.global360.com)



**Global 360**  
2911 Turtle Creek Blvd. # 1100  
Dallas, TX 75219  
Phone: 214-520-1660  
Fax: 214-219-0476  
[www.global360.com](http://www.global360.com)

© 2005 Global 360, Inc. All rights reserved. Global 360, G360 Enterprise and the Global 360 logo are either trademarks or registered trademarks of Global 360, Inc. All other names and product names may be trademarks or registered trademarks of their respective companies or owners.